

Roll-A-Door®

SERIES 3 – SQUARELINE™ INDUSTRIAL DOOR (R3I)



CURTAIN



0.5mm continuous brake pressed steel curtain.

SIZE	MINIMUM DOOR SIZE	MAXIMUM DOOR SIZE
HEIGHT	1200mm	3600mm
WIDTH	2000mm	5500mm

*Up to 3600mm (h) x 3600mm (w) or 3000mm (h) x 5500mm (w).

BOTTOM RAIL

Aluminium bottom rail with weatherseal.

Taper: Optional. To maximum 5500mm (w). Minimum taper ratio is 1:150.

Maximum taper ratio is 1:10, with maximum total taper 250mm.

GUIDES

Supplied with 50mm galvanised steel guides.

Windlocking: None.

DRUM

Pressed galvanised metal.

SPRINGS

Spring life designed for 20,000 cycles.

OPERATION

Nylofelt® minimises friction, ensures continuous smooth, quiet operation for a minimum of 20,000 cycles.

MANUAL

- Doors up to 2400mm (h) - without hauling chain wheel equipment.
- Doors over 2400mm (h) - direct drive chain equipment.

AUTOMATED

- GDO-10
- AXESS PRO

BRACKETS

Hot dipped, galvanised 50mm hot rolled steel.

LOCKING

Waist high slide bolt locking is located internally and supplied on the left hand side as standard.

OPTIONS

On wider doors locks can be fitted both sides.

Centre lift lock with external key and internal knob operation.

Internal and/or external bottom rail slide bolt locking.

FINISHES

Extensive range of standard Colorbond® colours and Zinalume® finish.

OPTIONS

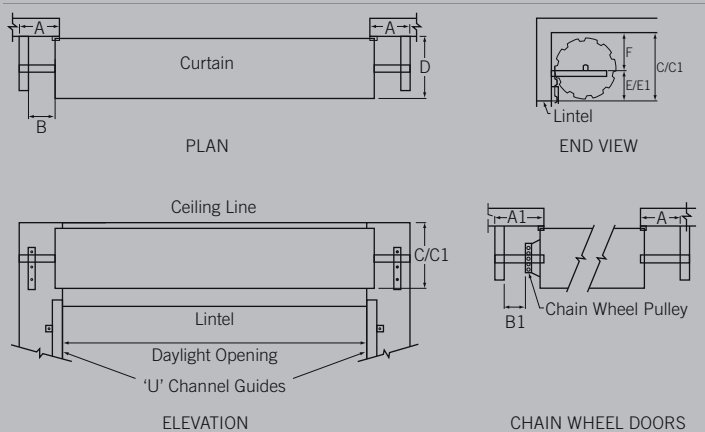
Ventilation: Optional. Slotted.

Mullions: N/A

Personnel access: N/A

Wicket gates: N/A

CLEARANCES



DIMENSIONS

HEIGHT	A	A1	A1*	B	B1	C	C1	D	E	E1	F
Up to 2400	135	135	195	35	N/A	450	420	540	150	90	300
2401-3050	135	205	195	35	N/A	450	420	540	150	120	300
3051-3300	135	205	195	35	5	460	430	560	150	120	310
3301-3600	135	205	195	35	5	460	N/A	560	150	N/A	310

Information relating to product measurements, colours and specifications is accurate at the time of print and is subject to slight variations resulting from the manufacturing process. B&D reserves the right to change product specifications at any time. Installation measurements are approximate and may vary depending on application and other factors, including the opening and structure. Take care when handling and storing slats. Damage to the slats can affect door performance.

Installation should only be performed by a professional garage door installer. Installers should refer to the instruction manual for this product prior to commencing installation. The instruction manual contains important safety and other information that must be followed when installing the product.



Doors & Openers®

THERE'S SO MUCH MORE BEHIND A B&D DOOR

Call 13 62 63 or visit www.bnd.com.au for further information.

B&D Doors is a division of B&D Australia Pty Ltd ABN 25 010 473 971 © 2013 B&D Australia